

Ultima 15

The Venom Ceramica has evolved into a powerful, dynamic, and emerging group of India's ceramic industry. We are today due to our employees' close teamwork and our shared core value system that emphasizes the commitment to excellence, closeness to customers, and the spirit of innovation.

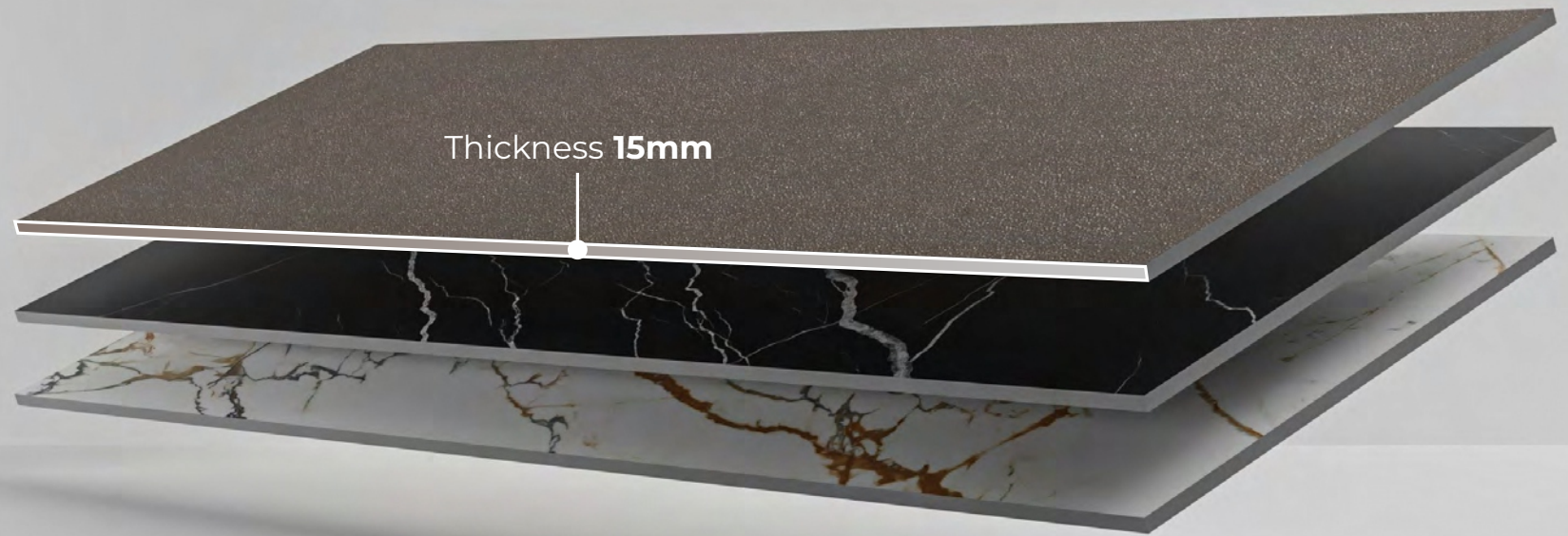
Ultima 15

Our Ultima15 Collection inherits the expressive power of concrete, a material that wrote important pages in the history of architecture and plays a fundamental role in contemporary design by virtue of the capability to radiate strong tactile energy to every context surrounding it. Feel the supremacy in detail, foremost texture and it's 15 mm thickness is all set to blow your mind by giving the robust feel in your surrounding. Manifest the Magnificence with the hues of glory inbuilt by our surfaces. Our surfaces are truly crafted to deliver an unmatched experience.



ABOUT 800X2400MM

800 x 2400 x 15 MM is perfect to carry out cutting, moulding, bull nosing & Chamfering process. The multiple application which 15 mm brings into life is marvellous. We are using it as a floor, wall and countertop applications, because of the colorbody 15 mm slabs, the beauty of any statuario Or breccia is not less than the real natural figures. In the high traffic areas, like airports, shopping malls, metro stations, public parking areas, etc, the use of unglazed products in 15 mm is perfect option. We are making and promoting 15 mm nueva slabs to use as Countertops because it is food grade safe and easy to install and economic than it's competitive products while having the better ambience and feel



Techonology & Innovation

Venom Ceramica is standing tall and strong on the basis of a robust infrastructure setting that is well rigged with modern technology and advanced machinery. the facility is well equipped with the latest digital printing technology.following stages are undertaken to serve the finest quality of engineered surfaces,pressing - the press without mould for large formats makes 80x240cm with any desired thickness is 15mm.digital decoration - creadigit xxi from system is a powerful machine that performs some fantastic creative work on tile. for us, quality is the top priority, we are taking our tile surface very seriously and we make perfect flat surfaces by researching,developing & maintaining glazing line parameters and kiln conditions.



Ultima 15

Index

Application Area / Features / Approach Area	01
Plain Solid Colors	02
Galaxy Snp Series	03
Terrazzo Series	04
Carving Series	05
Light Marble Series	06
Dark Marbles Series	07
Technical Specifications	08
Cleaning & Maintenance	09
Packing Details <i>(Export & Domestic)</i>	10

APPLICATION AREA

Kitchen counter top



Dining table



Table top



Door and window frame



Shelves



Shower base



Vanity top



Wash basin



Staircase



Bathtub



Floor & Wall



FEATURES



Lowest maintenance effort



Hygienic surface



Water resistant



Impact resistant



Frost resistant



Scratch resistant



Stain resistant



Fire resistant



Heat resistant



Resistant to bending

APPROACH AREA



Residential Areas



Commercial Areas



Hospitals



Shops and Malls



Hotels and Restaurants



Schools and Colleges



Religious Places



Railway Stations



Parks and Outdoor Furnitures



Public Places



— PLAIN SOLID COLORS

Ultima 15

SUPER WHITE

Size
800x2400MM

Finish
Glossy / Matt

Typology
Color Body

Application Area



Ultima 15

**DIAMOND
BLACK**

Size
800x2400MM

Finish
Glossy / Matt

Typology
Color Body

Application Area



Ultima 15

**CREMA
IVORY**

Size
800x2400MM

Finish
Glossy / Matt

Typology
Full Body

Application Area



Ultima 15

MUSHROOM

Size
800x2400MM

Finish
Glossy / Matt

Typology
Full Body

Application Area



Ultima 15

DARKGREY

Size
800x2400MM

Finish
Glossy / Matt

Typology
Full Body

Application Area



Ultima 15

GREY

Size
800x2400MM

Finish
Glossy / Matt

Typology
Full Body

Application Area



Ultima 15

BROWN

Size
800x2400MM

Finish
Glossy / Matt

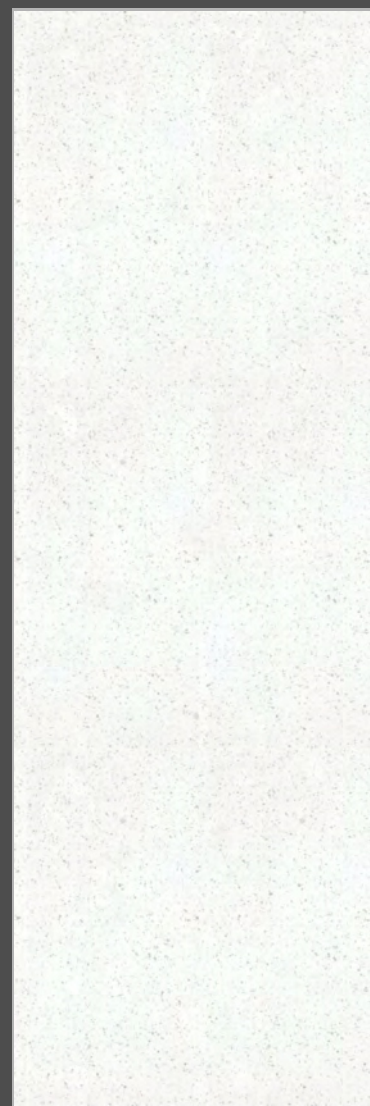
Typology
Full Body

Application Area





Ultima 15



**GALAXY
ROYAL**

Size
800x2400MM

Finish
Glossy

Typology
Full Body

Application Area



Ultima 15



**GALAXY
WHITE**

Size
800x2400MM

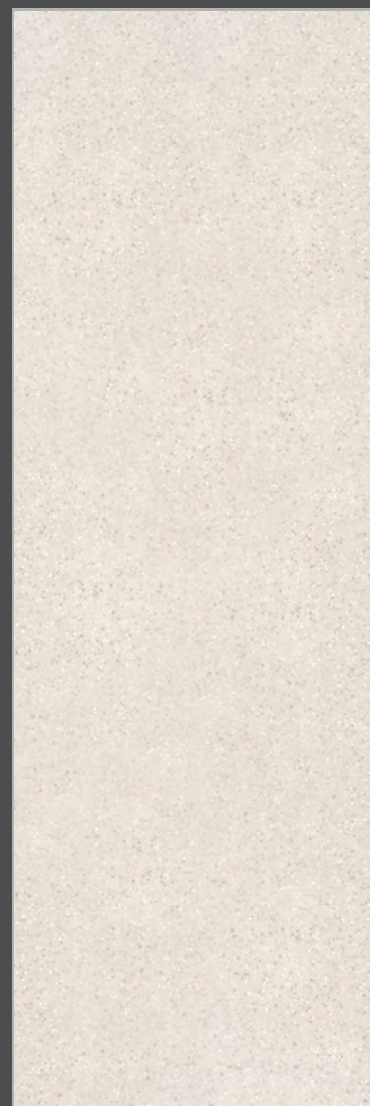
Finish
Glossy

Typology
Full Body

Application Area



Ultima 15



**GALAXY
CREMA**

Size
800x2400MM

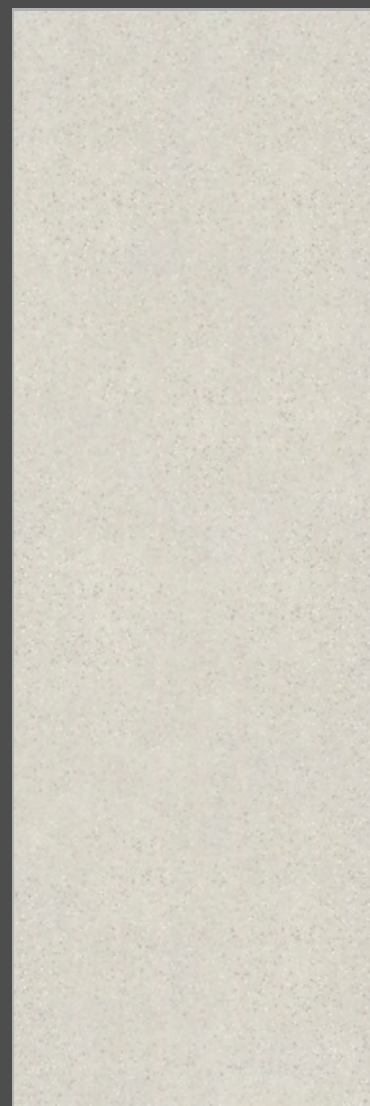
Finish
Glossy

Typology
Full Body

Application Area



Ultima 15



**GALAXY
VERDE**

Size
800x2400MM

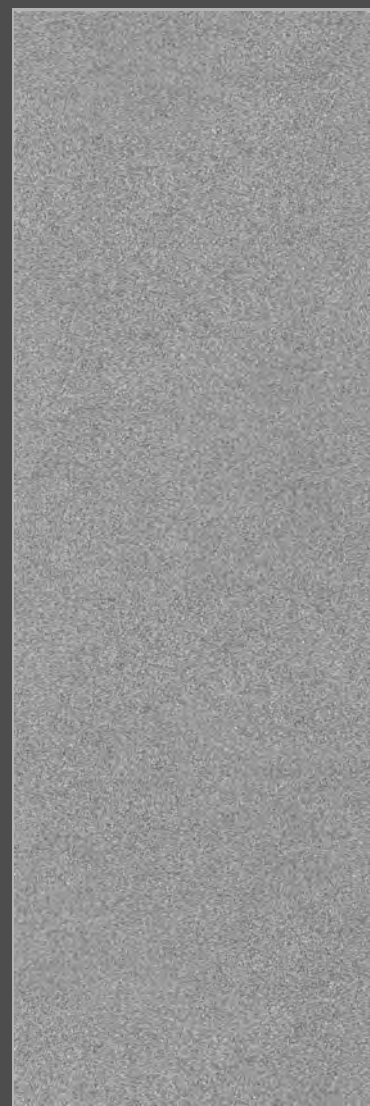
Finish
Glossy

Typology
Full Body

Application Area



Ultima 15



**GALAXY
GREY**

Size
800x2400MM

Finish
Glossy

Typology
Full Body

Application Area



Ultima 15



**GALAXY
MUSHROOM**

Size
800x2400MM

Finish
Glossy

Typology
Full Body

Application Area



Ultima 15



**GALAXY
BROWN**

Size
800x2400MM

Finish
Glossy

Typology
Full Body

Application Area





Ultima 15



**GALAXY
BLACK**

Size
800x2400MM

Finish
Glossy

Typology
Full Body

Application Area



Ultima 15



**GALAXY
BEIGE**

Size
800x2400MM

Finish
Glossy

Typology
Color Body

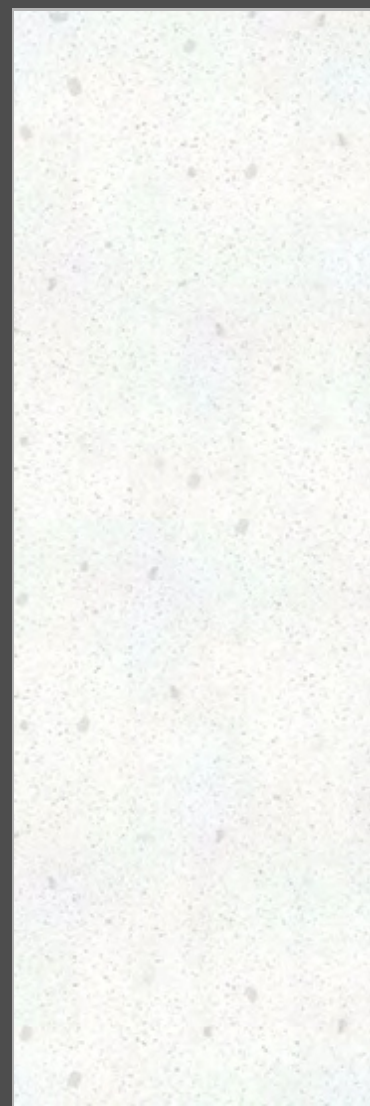
Application Area





— TERRAZZO SERIES

Ultima 15



**TERRAZZO
WHITE**

Size
800x2400MM

Finish
Glossy

Typology
Full Body

Application Area



Ultima 15



**TERRAZZO
CREMA**

Size
800x2400MM

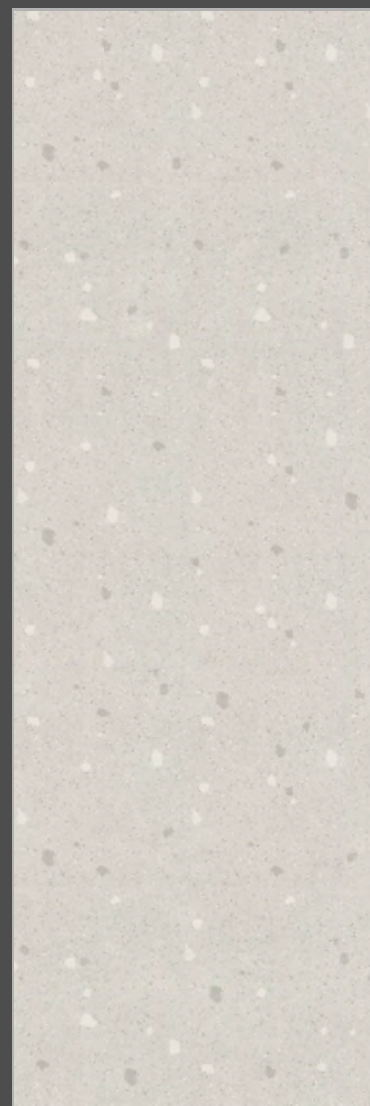
Finish
Glossy

Typology
Full Body

Application Area



Ultima 15



**TERRAZZO
VERDE**

Size
800x2400MM

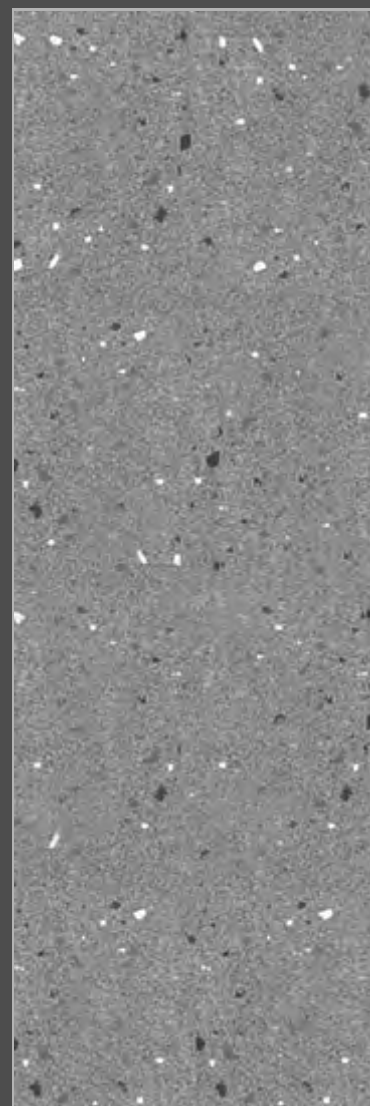
Finish
Glossy

Typology
Full Body

Application Area



Ultima 15



**TERRAZZO
GREY**

Size
800x2400MM

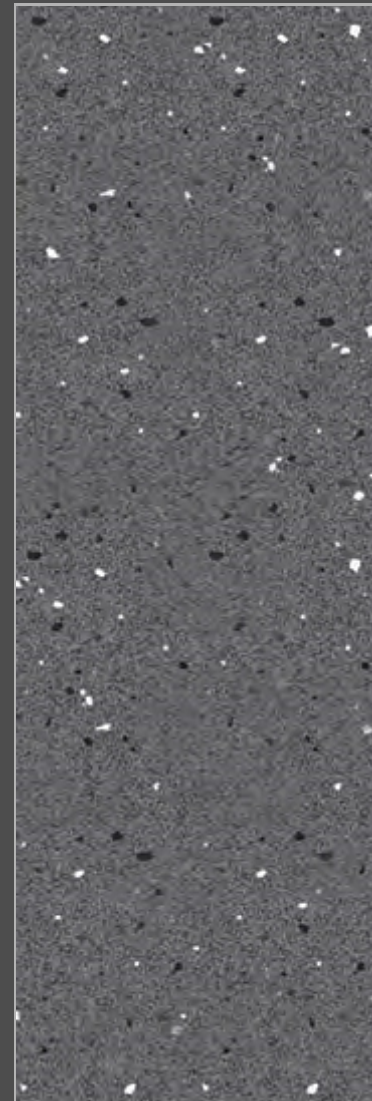
Finish
Glossy

Typology
Full Body

Application Area



Ultima 15



**TERRAZZO
DARK GREY**

Size
800x2400MM

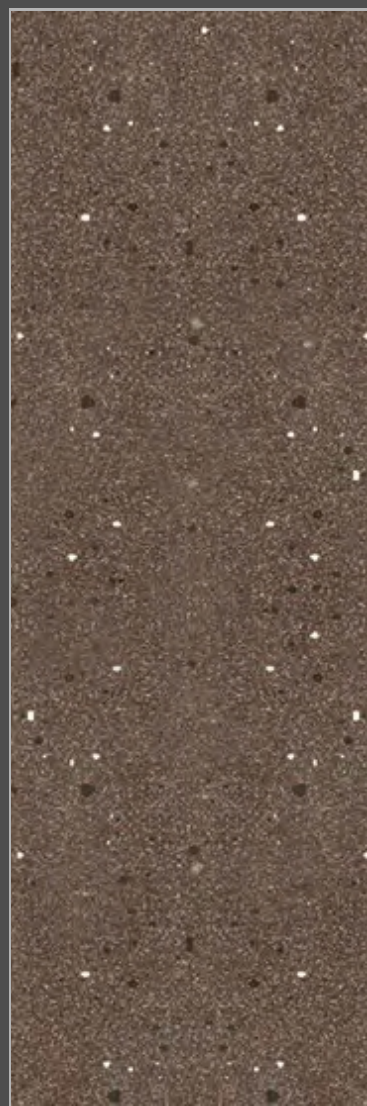
Finish
Glossy

Typology
Full Body

Application Area



Ultima 15



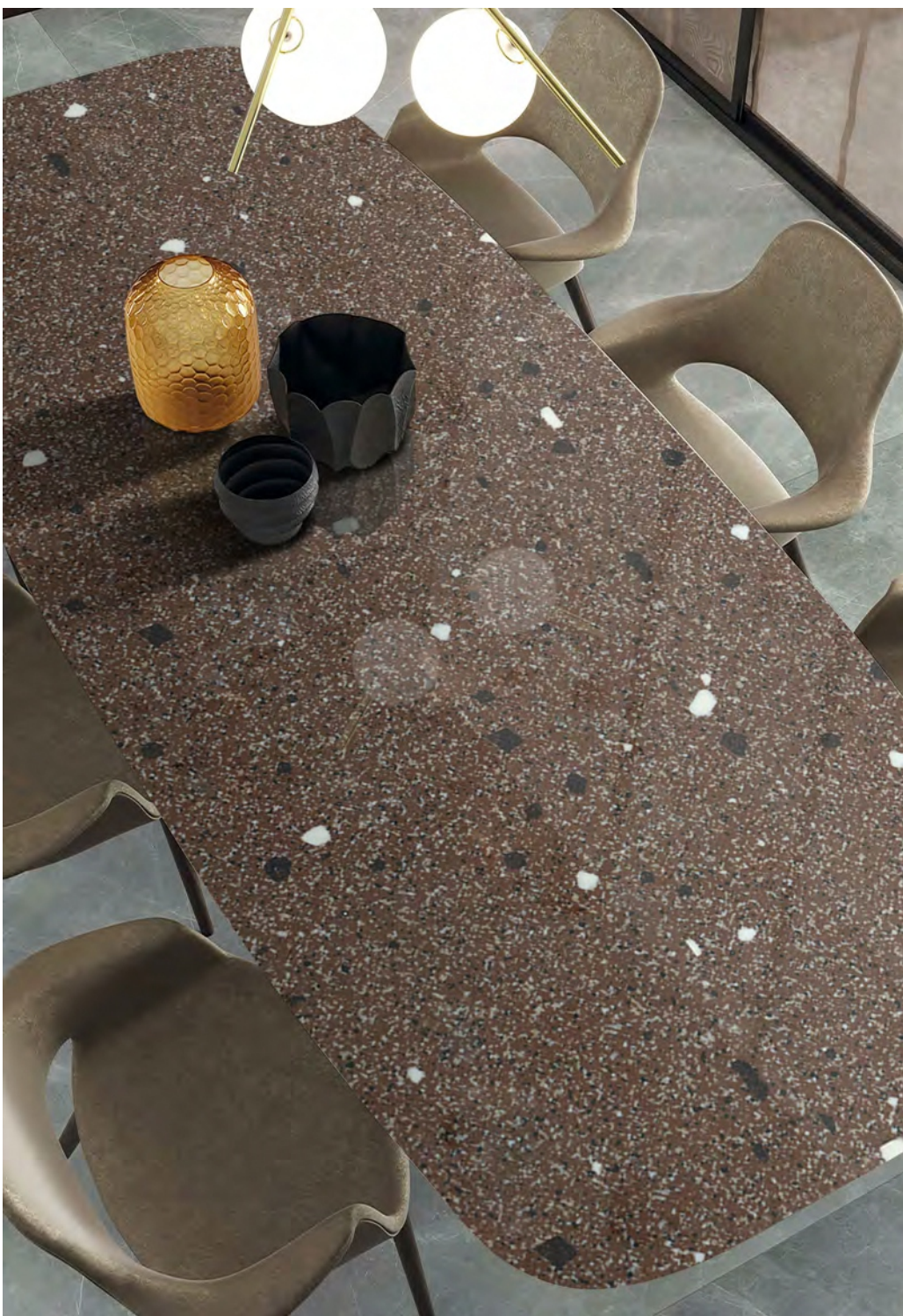
**TERRAZZO
BROWN**

Size
800x2400MM

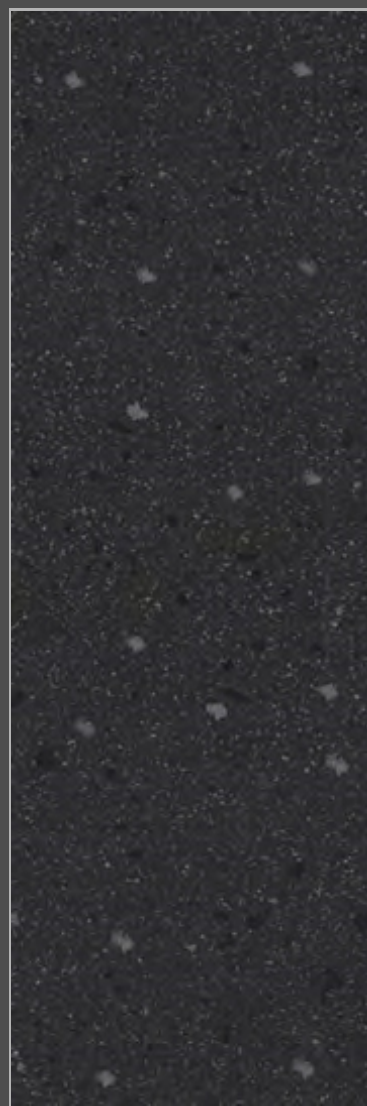
Finish
Glossy

Typology
Full Body

Application Area



Ultima 15



**TERRAZZO
BLACK**

Size
800x2400MM

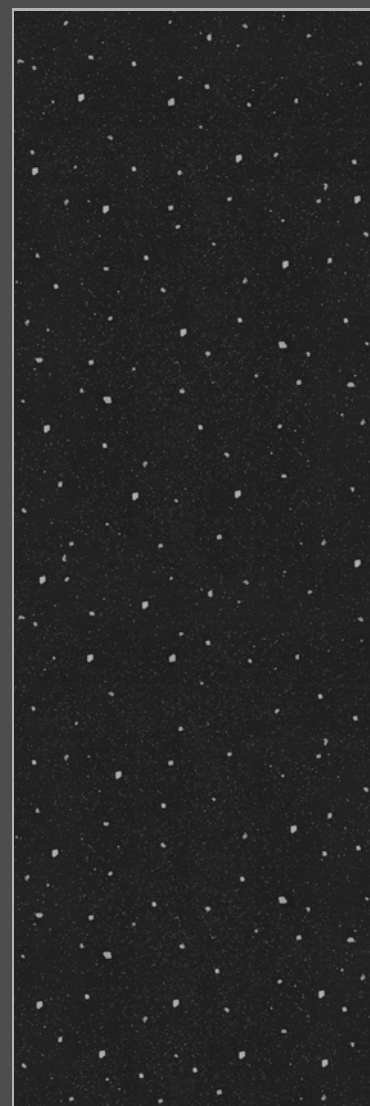
Finish
Glossy

Typology
Full Body

Application Area



Ultima 15



TERRAZZO NIGHT

Size
800x2400MM

Finish
Glossy

Typology
Color Body

Application Area





Ultima 15



**CARVING
GREY**

Size
800x2400MM

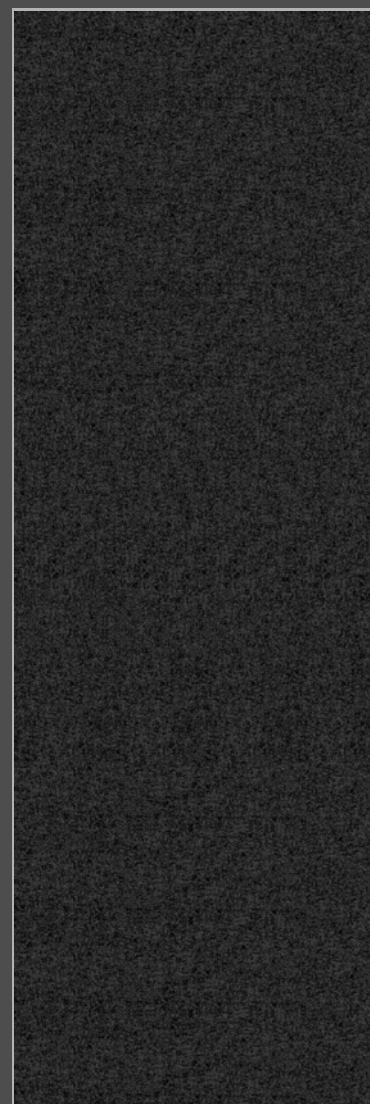
Finish
Carving Matt

Typology
Color Body

Application Area



Ultima 15



**CARVING
BLACK**

Size
800x2400MM

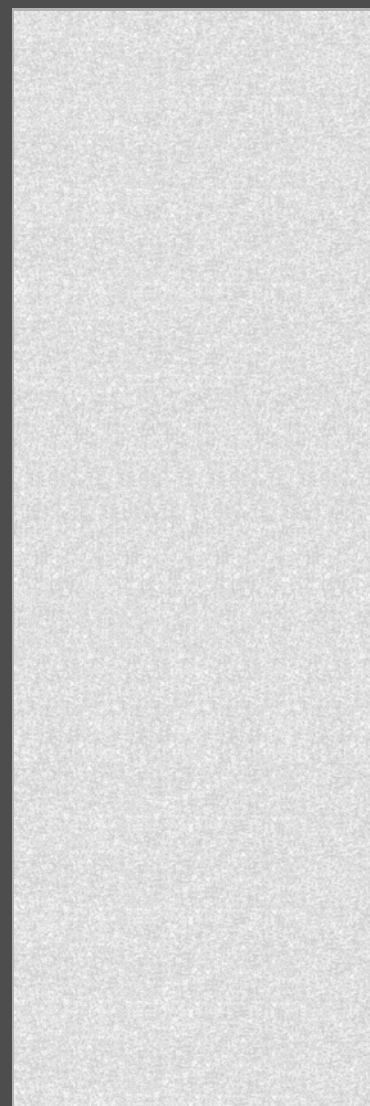
Finish
Carving Matt

Typology
Color Body

Application Area



Ultima 15



**CARVING
WHITE**

Size
800x2400MM

Finish
Carving Matt

Typology
Color Body

Application Area



Ultima 15



**CARVING
BROWN**

Size
800x2400MM

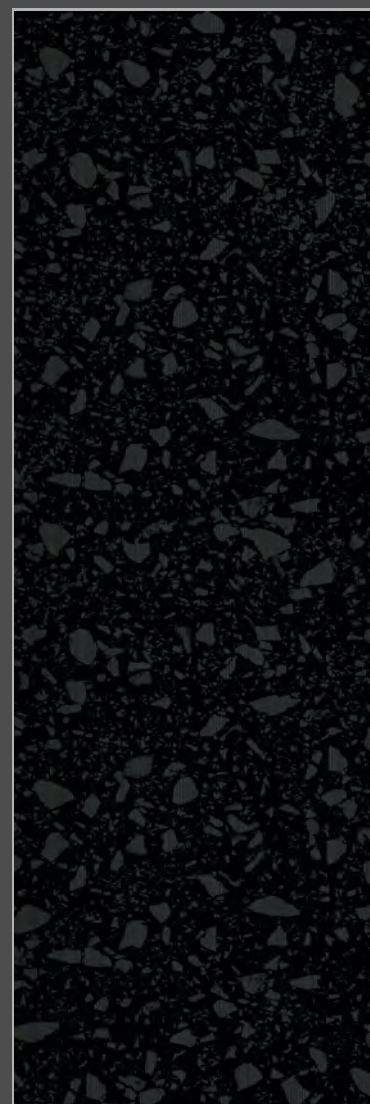
Finish
Carving Matt

Typology
Color Body

Application Area



Ultima 15



DRAGON CHIPS BLACK

Size
800x2400MM

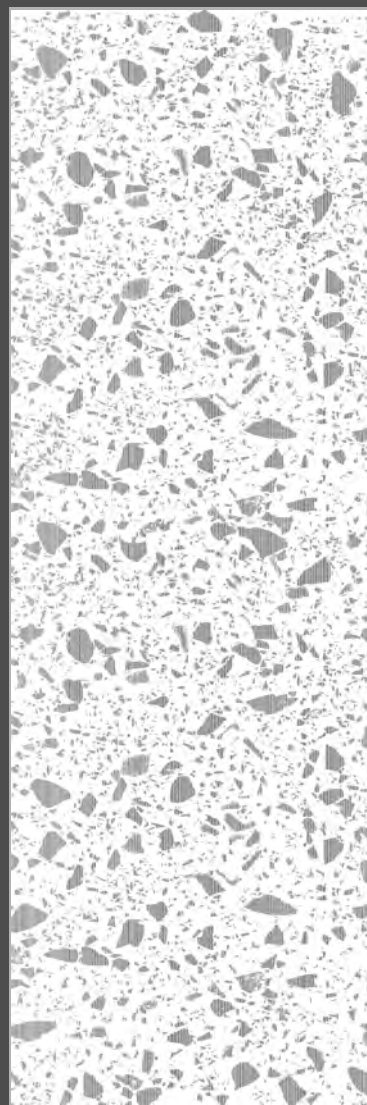
Finish
Carving Matt

Typology
Color Body

Application Area



Ultima 15



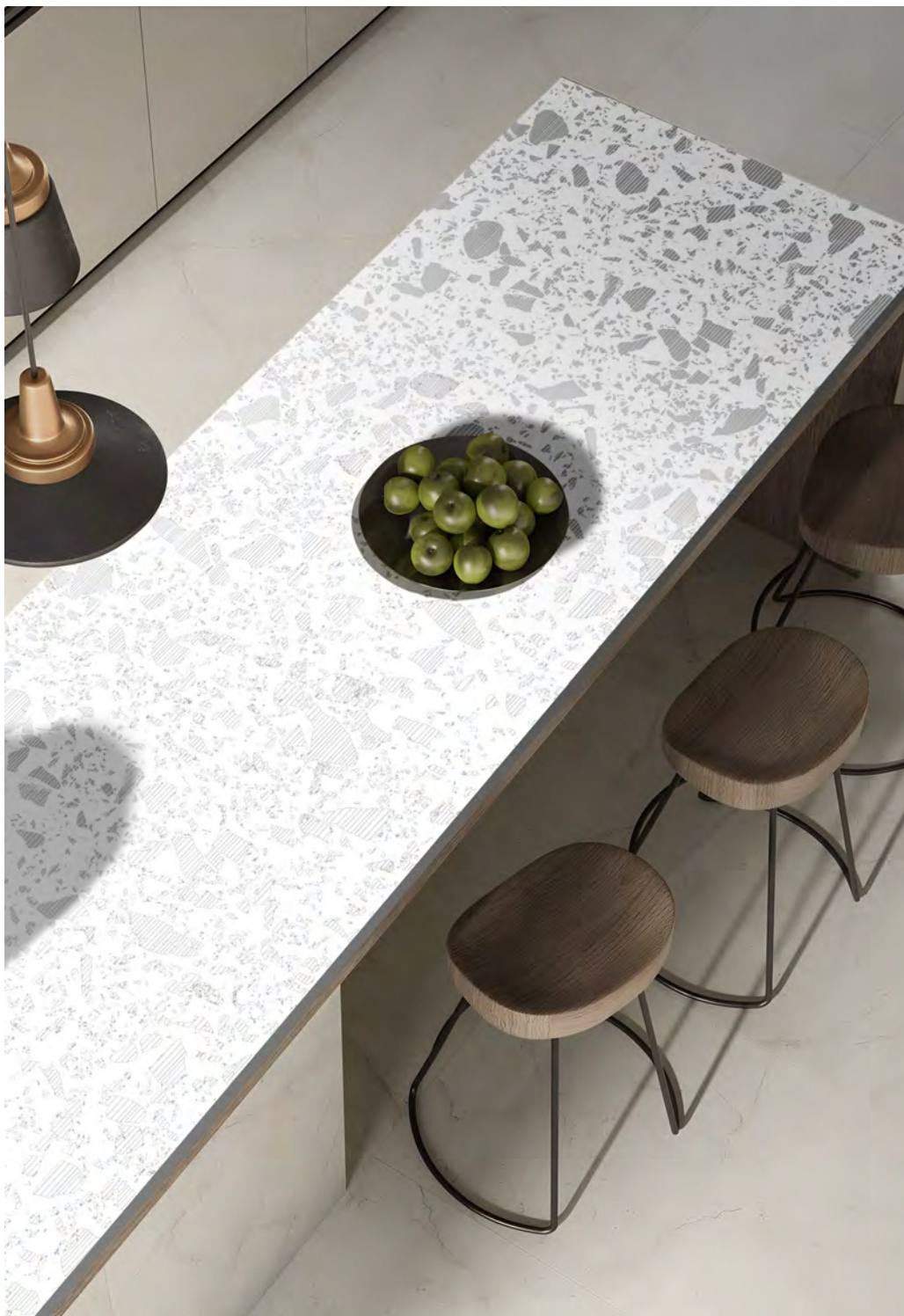
DRAGON CHIPS WHITE

Size
800x2400MM

Finish
Carving Matt

Typology
Color Body

Application Area



Ultima 15



**BLACK
BERMUDA**

Size
800x2400MM

Finish
Carving Matt

Typology
Color Body

Application Area



Ultima 15



**WHITE
BERMUDA**

Size
800x2400MM

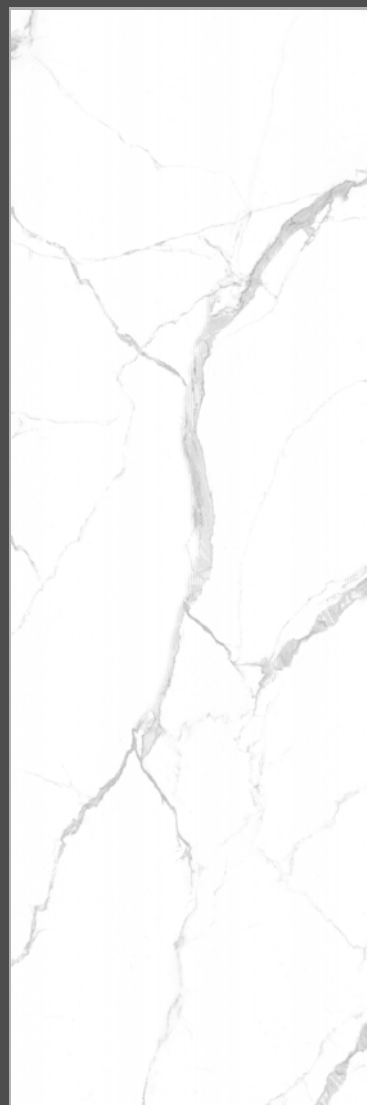
Finish
Carving Matt

Typology
Color Body

Application Area



Ultima 15



STATUARIO ICE LINEN

Size
800x2400MM

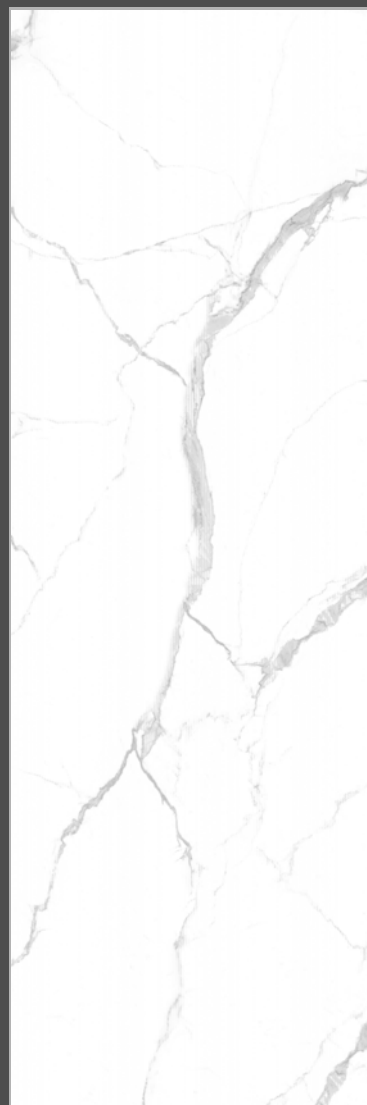
Finish
Carving Matt

Typology
Color Body

Application Area



Ultima 15



**STATUARIO ICE
LAPATTO**

Size
800x2400MM

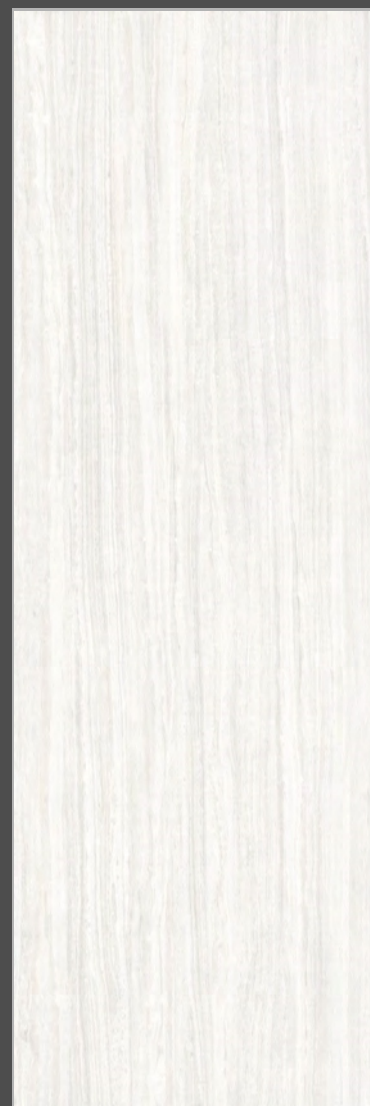
Finish
Carving Matt

Typology
Color Body

Application Area



Ultima 15



**FILO
GREY**

Size
800x2400MM

Finish
Carving Matt

Typology
Color Body

Application Area



Ultima 15



**FILO
BEIGE**

Size
800x2400MM

Finish
Carving Matt

Typology
Color Body

Application Area



Ultima 15



**MONTE
CARLO**

Size
800x2400MM

Finish
Carving Matt

Typology
Color Body

Application Area



Ultima 15



**ROSALIA
GOLD**

Size
800x2400MM

Finish
Carving Matt

Typology
Color Body

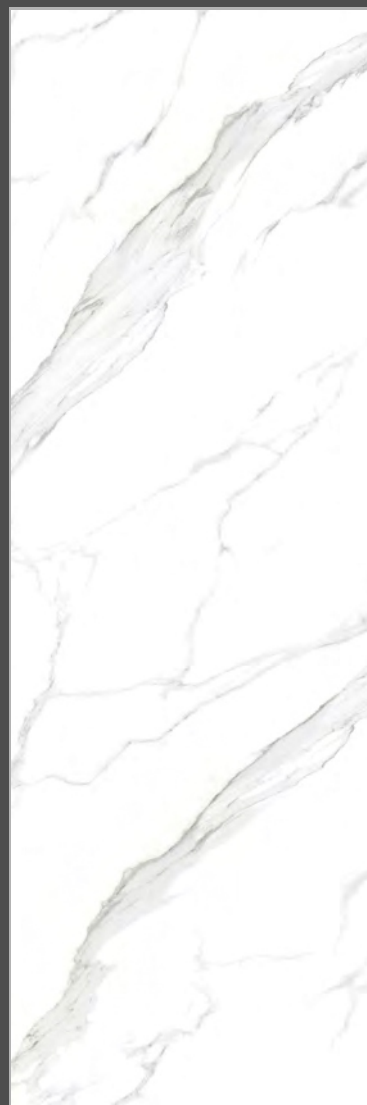
Application Area





— LIGHT MARBLES

Ultima 15



**CALACATTA
WOW**

Size
800x2400MM

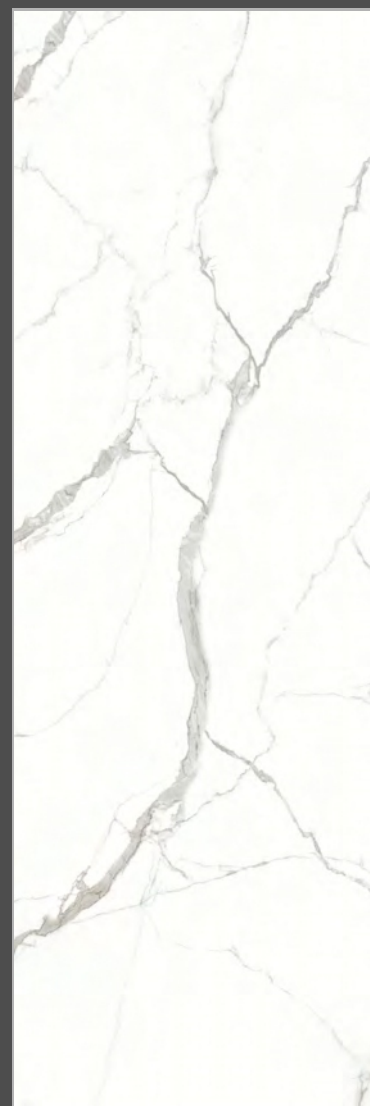
Finish
Glossy

Typology
Color Body

Application Area



Ultima 15



STATUARIO ICE

Size
800x2400MM

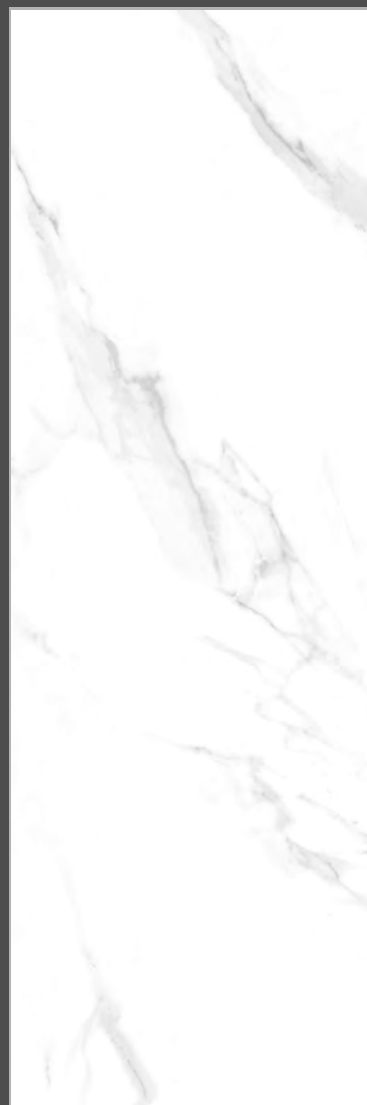
Finish
Glossy

Typology
Color Body

Application Area



Ultima 15



**STATUARIO
VIVIAN**

Size
800x2400MM

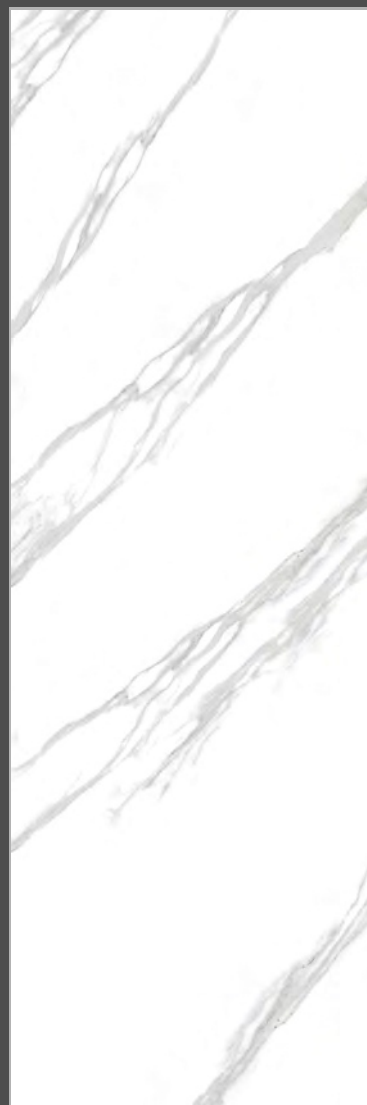
Finish
Glossy

Typology
Color Body

Application Area



Ultima 15



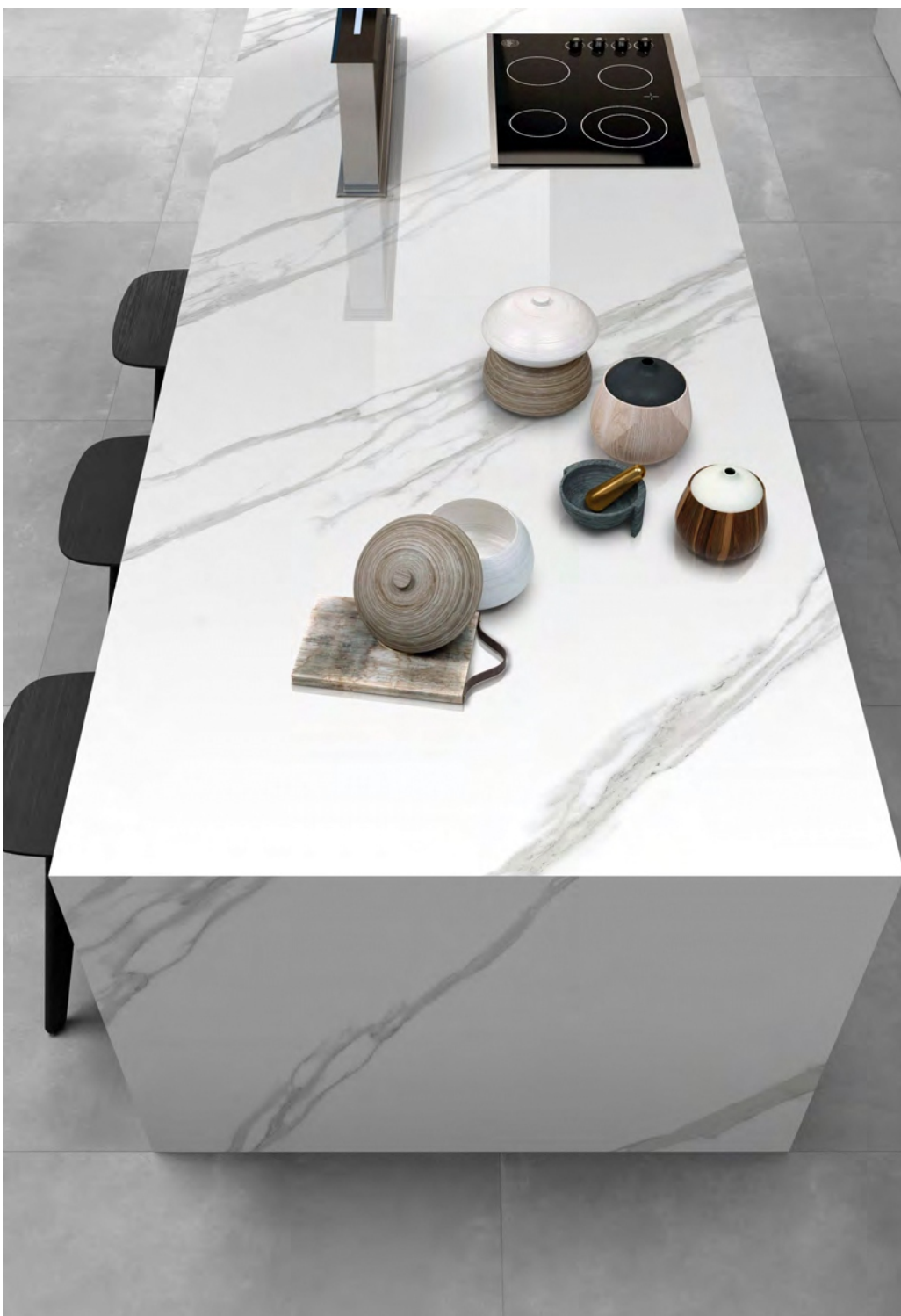
**HELIX
WHITE**

Size
800x2400MM

Finish
Glossy

Typology
Color Body

Application Area



Ultima 15



ASACIA

Size
800x2400MM

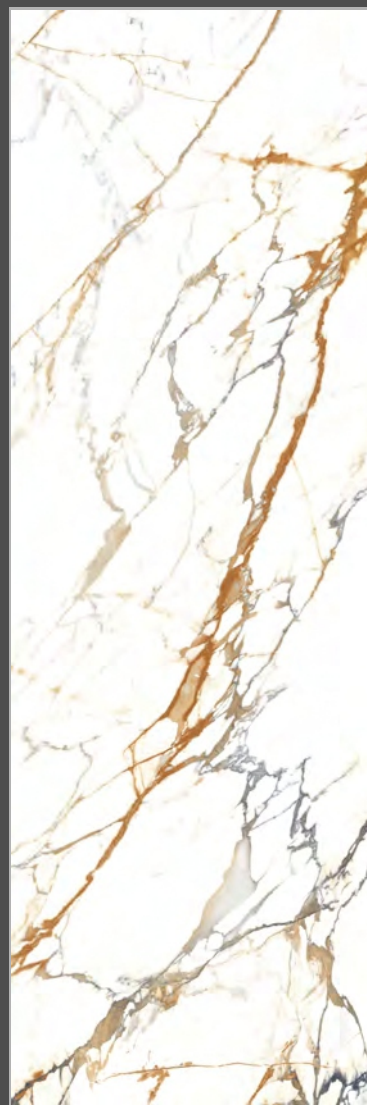
Finish
Glossy

Typology
Color Body

Application Area



Ultima 15



**SUGAR
CREAM**

Size
800x2400MM

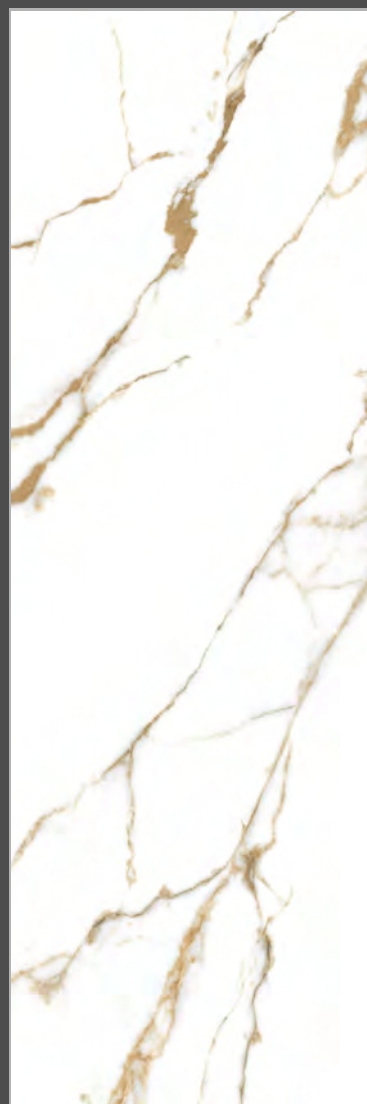
Finish
Glossy

Typology
Color Body

Application Area



Ultima 15



**ORO
BIANCO**

Size
800x2400MM

Finish
Glossy

Typology
Color Body

Application Area



Ultima 15



**ALASKA
GOLD**

Size
800x2400MM

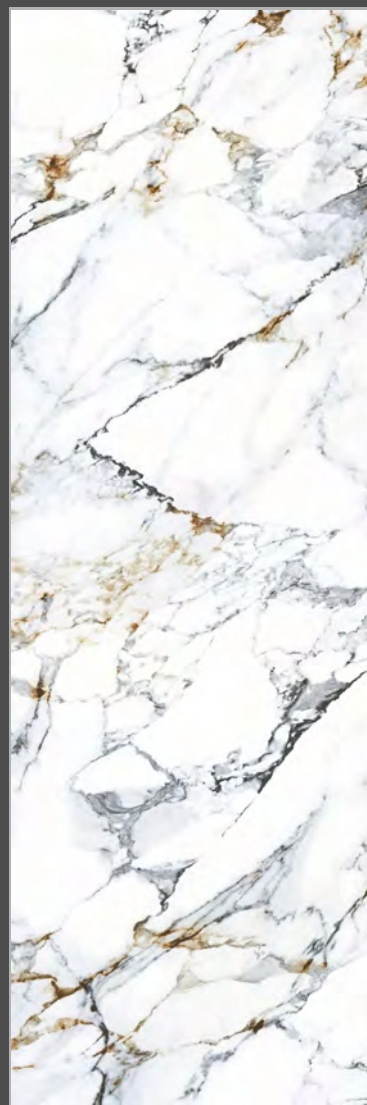
Finish
Glossy

Typology
Color Body

Application Area



Ultima 15



**ARBESCATO
WHITE**

Size
800x2400MM

Finish
Glossy

Typology
Color Body

Application Area



Ultima 15



PROSTONE IVORY

Size
800x2400MM

Finish
Glossy

Typology
Color Body

Application Area



Ultima 15



**ROSSO
VENATO RED**

Size
800x2400MM

Finish
Glossy

Typology
Color Body

Application Area



Ultima 15



**ROSSO
VENATO BLACK**

Size
800x2400MM

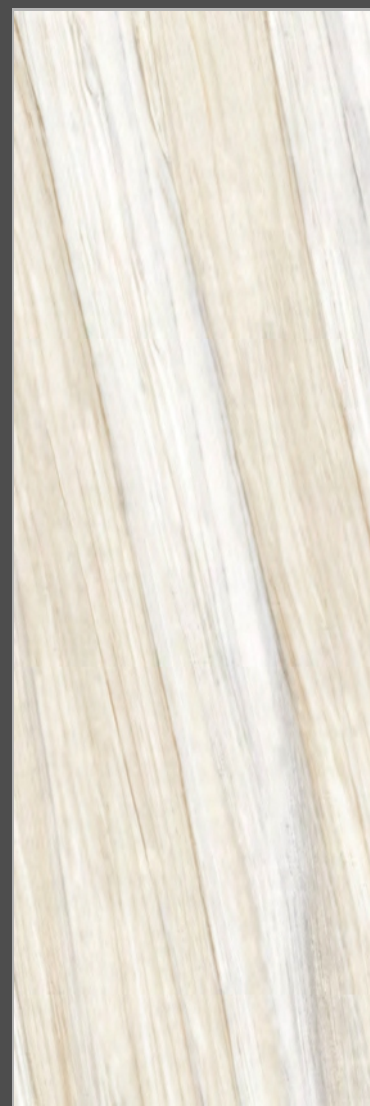
Finish
Glossy

Typology
Color Body

Application Area



Ultima 15



PALLISANDRO

Size
800x2400MM

Finish
Glossy

Typology
Color Body

Application Area



Ultima 15



**OPERA
WHITE**

Size
800x2400MM

Finish
Glossy

Typology
Color Body

Application Area



Ultima 15



**CHIPS
WHITE**

Size
800x2400MM

Finish
Glossy

Typology
Color Body

Application Area



Ultima 15



TRAVERTINE

Size
800x2400MM

Finish
Glossy

Typology
Color Body

Application Area



Ultima 15



**BRECCIA
BEIGE**

Size
800x2400MM

Finish
Glossy

Typology
Color Body

Application Area



Ultima 15



DYNA

Size
800x2400MM

Finish
Glossy

Typology
Color Body

Application Area



Ultima 15



BOTTOCHINO

Size
800x2400MM

Finish
Glossy

Typology
Color Body

Application Area



Ultima 15



**CREMA
MARFIL**

Size
800x2400MM

Finish
Glossy

Typology
Color Body

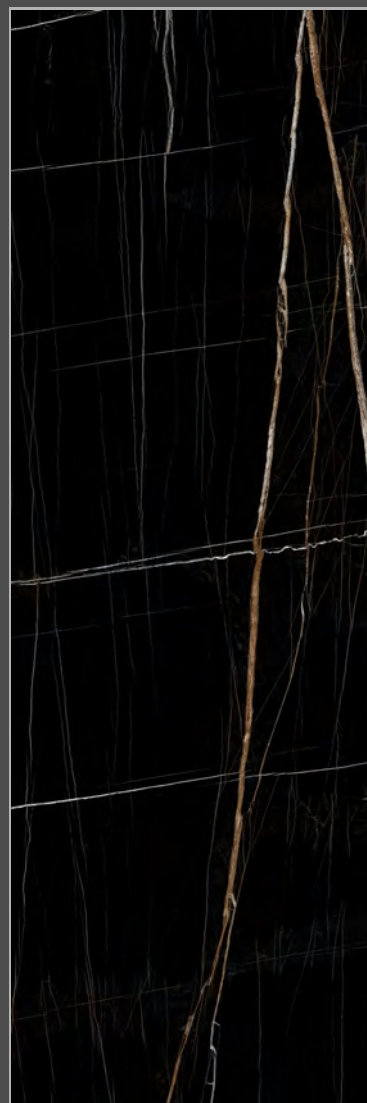
Application Area





— DARK MARBLES

Ultima 15



**BLACK
BEAUTY**

Size
800x2400MM

Finish
Glossy

Typology
Color Body

Application Area



Ultima 15



**VOLGA
BLUE**

Size
800x2400MM

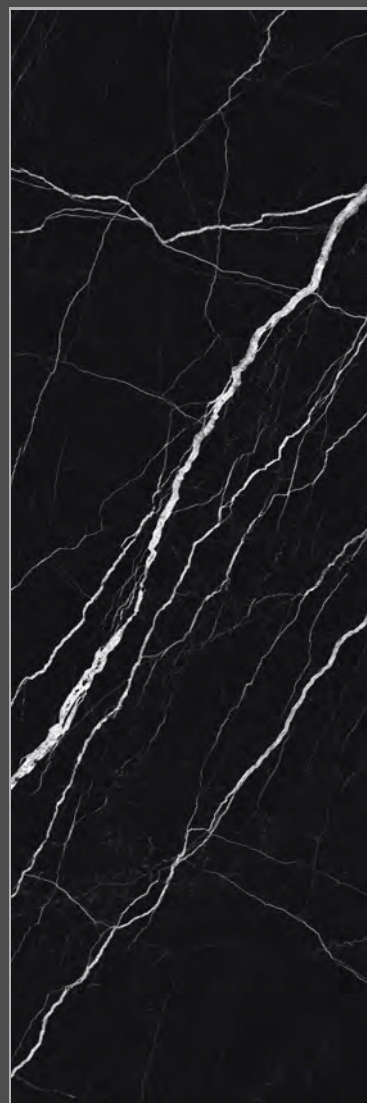
Finish
Glossy

Typology
Color Body

Application Area



Ultima 15



**DREAM
NIGHT**

Size
800x2400MM

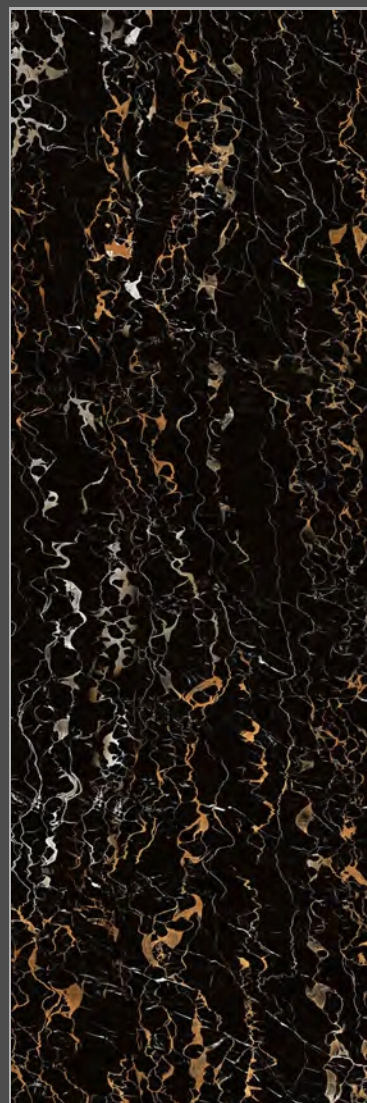
Finish
Glossy

Typology
Color Body

Application Area



Ultima 15



GOLDEN PORTORO

Size
800x2400MM

Finish
Glossy

Typology
Color Body

Application Area





Ultima 15



**WHITE
PORTORO**

Size
800x2400MM

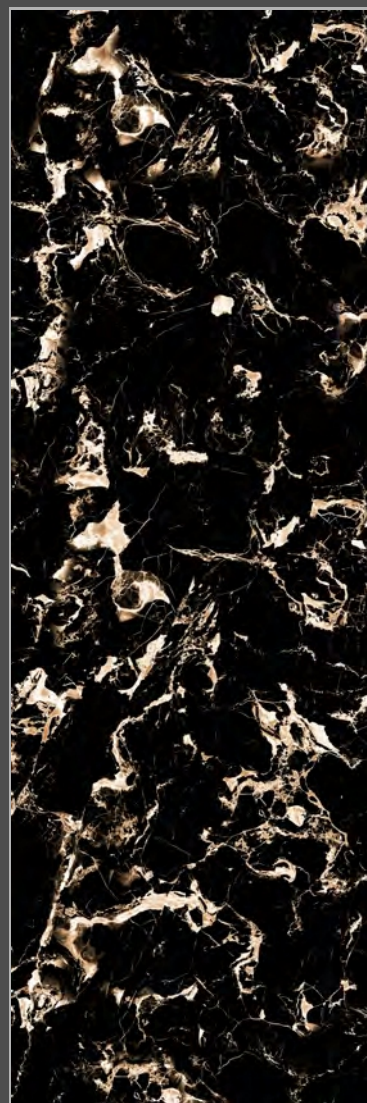
Finish
Glossy

Typology
Color Body

Application Area



Ultima 15



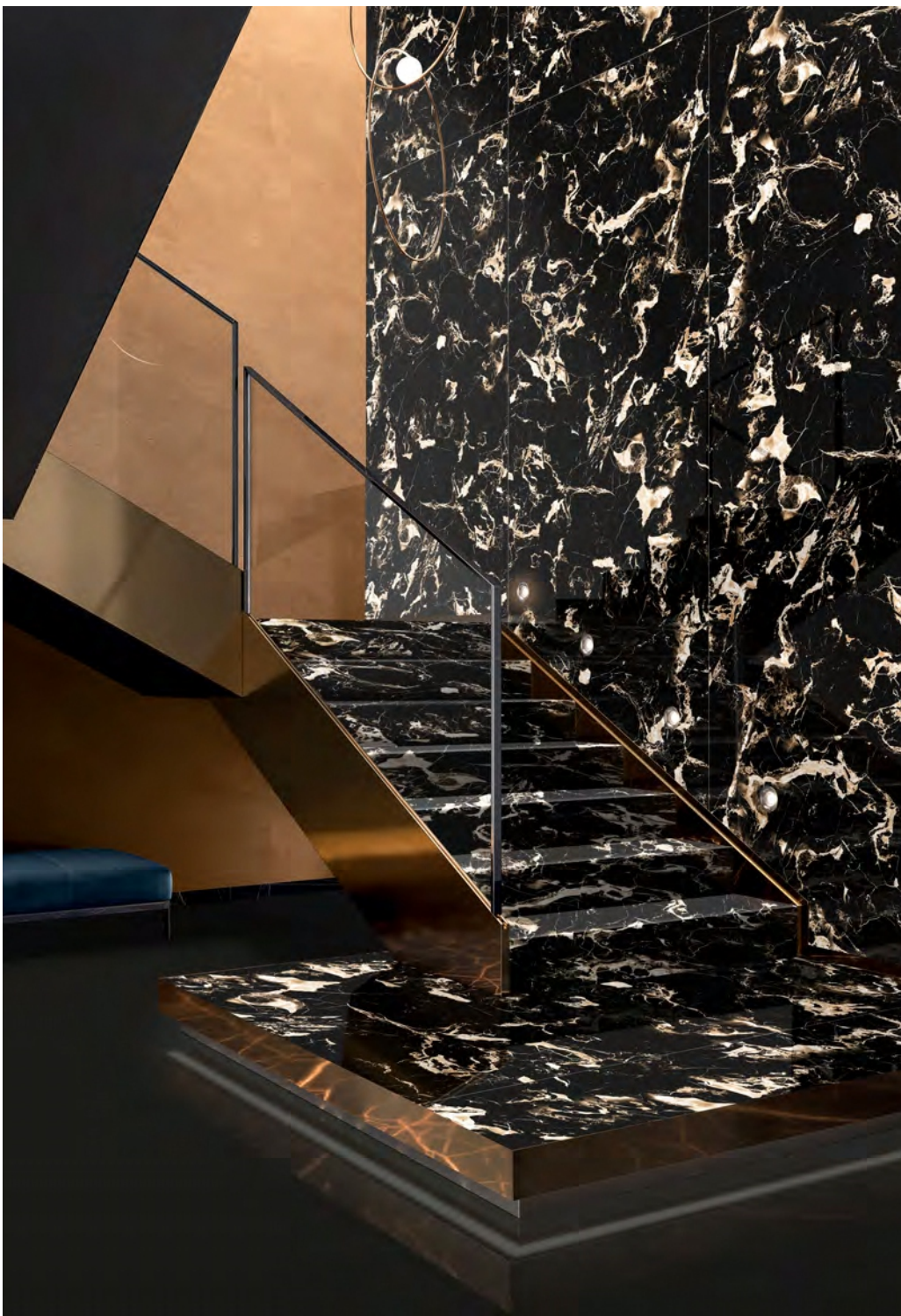
**PORTORO
NERO GOLD**

Size
800x2400MM

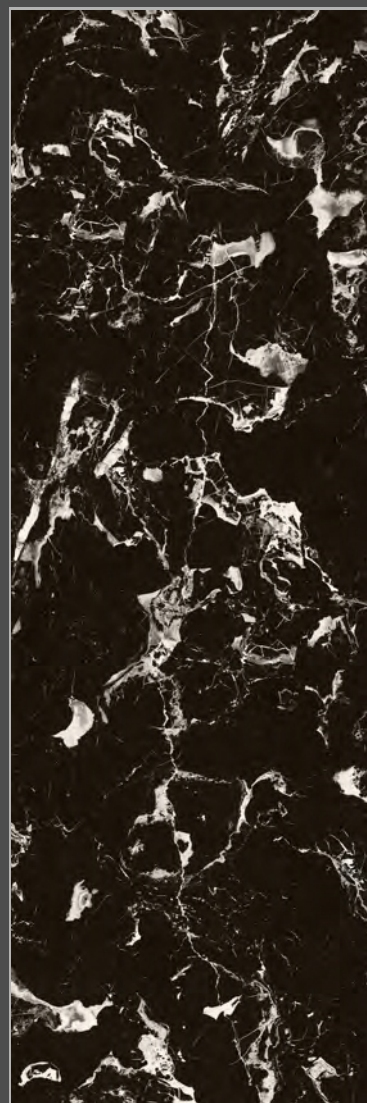
Finish
Glossy

Typology
Color Body

Application Area



Ultima 15



**PORTORO
NERO**

Size
800x2400MM

Finish
Glossy

Typology
Color Body

Application Area



Ultima 15



**DARK
EMPERADOR**

Size
800x2400MM

Finish
Glossy

Typology
Color Body

Application Area



Ultima 15



**CLEOPATRA
BEIGE**

Size
800x2400MM

Finish
Glossy

Typology
Color Body

Application Area



Ultima 15



**CAMOFLANGE
BROWN**

Size
800x2400MM

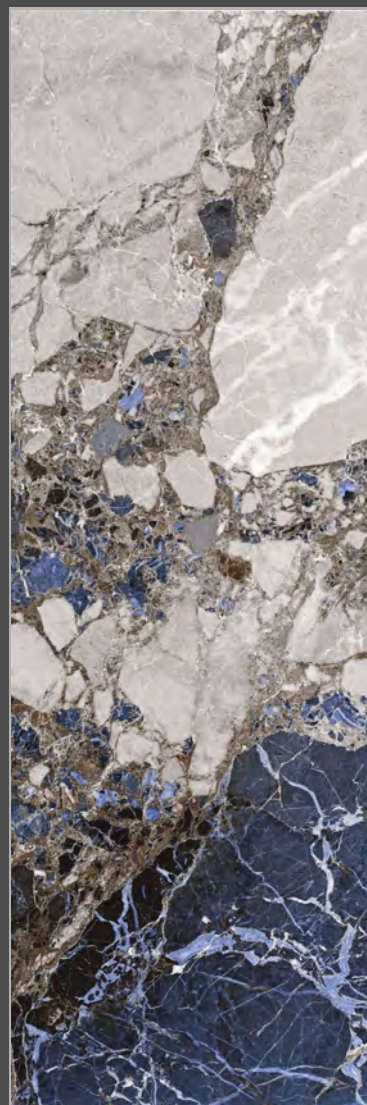
Finish
Glossy

Typology
Color Body

Application Area



Ultima 15



INFINITO AZUL

Size
800x2400MM

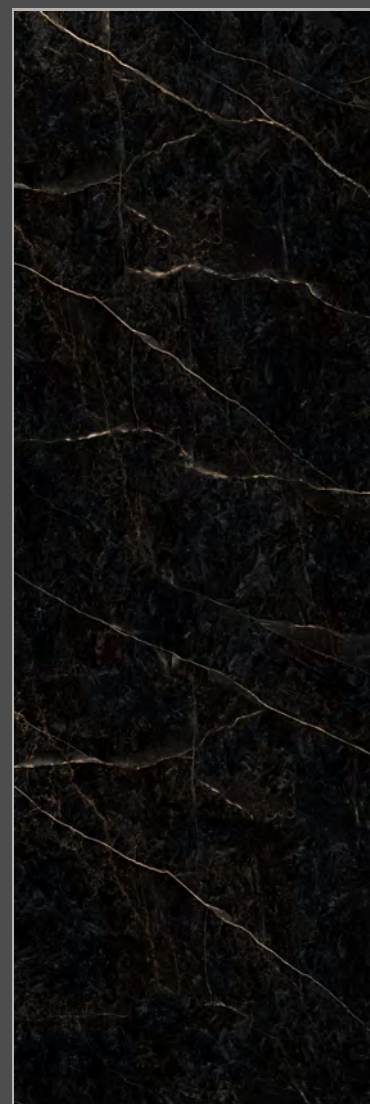
Finish
Glossy

Typology
Color Body

Application Area



Ultima 15



**ATENA
NERO**

Size
800x2400MM

Finish
Glossy

Typology
Color Body

Application Area



Ultima 15



**FOSSIL
DARK**

Size
800x2400MM

Finish
Glossy

Typology
Color Body

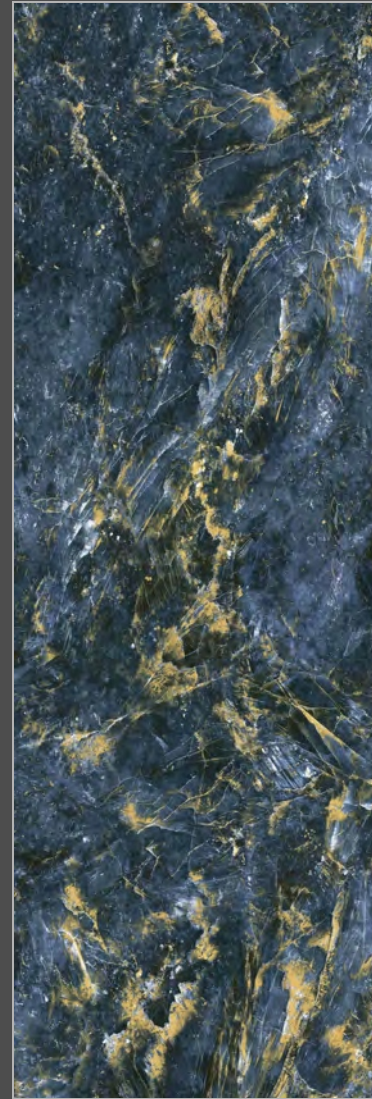
Application Area





Ultima 15

Ultima 15



THUNDER BLACK

THUNDER BLUE

Size
800x2400MM

Size
800x2400MM

Finish
Glossy

Finish
Glossy

Typology
Color Body

Typology
Color Body

Application Area



Application Area





Ultima 15

Ultima 15



**TOBACCO
BROWN**

**BOTEGA
GREY**

Size
800x2400MM

Size
800x2400MM

Finish
Glossy

Finish
Glossy

Typology
Color Body

Typology
Color Body

Application Area



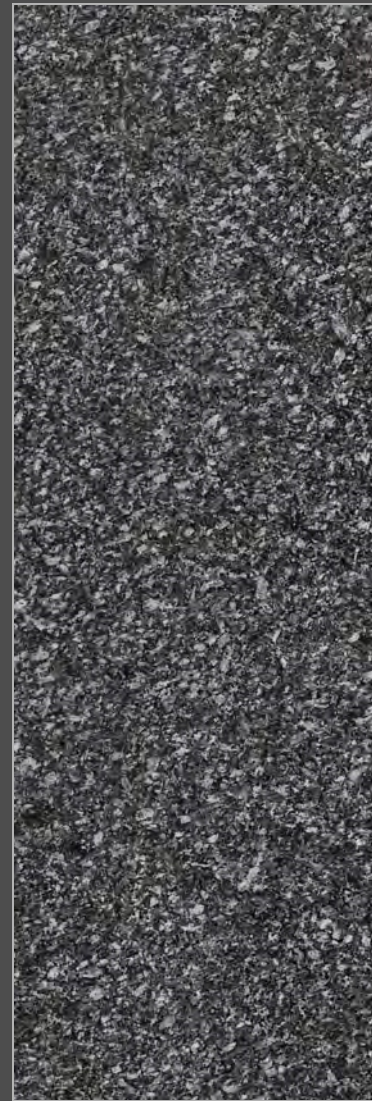
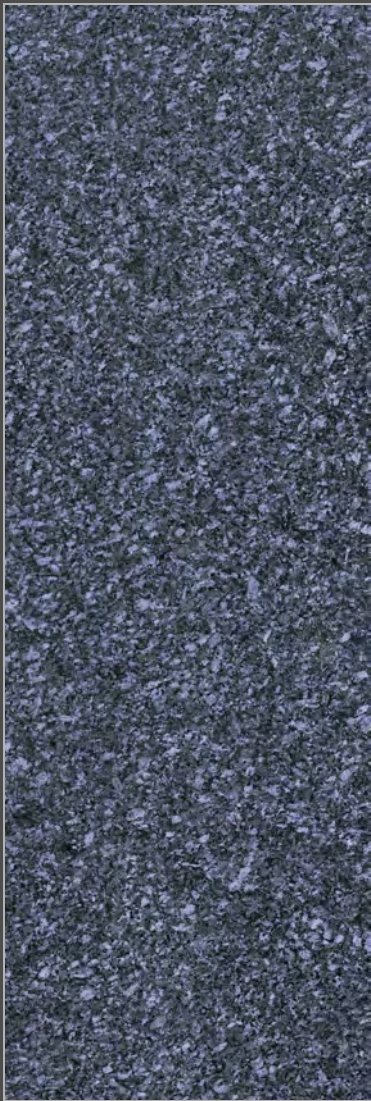
Application Area





Ultima 15

Ultima 15



**BLUE
PEARL**

**BLACK
PEARL**

Size
800x2400MM

Size
800x2400MM

Finish
Glossy

Finish
Glossy

Typology
Color Body

Typology
Color Body

Application Area



Application Area



TECHNICAL SPECIFICATION

CHARACTERISTIC	STANDARD AS PER ISO13006:2018/EN14411 Gr.BIa	STANDARD AS PER IS 15622:2017 Gr.BIa	METHOD OF TESTING	MEAN VALUE OF GRUPPONEUEVA
Regulatory Properties				
Deviation in Length and Width	±0.30 % (±1.00 mm)	±0.10 %	ISO 10545-2/IS 13630-1	± 0.10 %
Deviation in Thickness	±5.0 % (± 0.50 mm)	±5.0 %	ISO 10545-2/IS 13630-1	± 5.0 %
Straightness in Side	±0.30 % (± 0.80 mm)	±0.10 %	ISO 10545-2/IS 13630-1	± 0.10 %
Rectangularity	±0.30 % (±1.50 mm)	±0.10%	ISO 10545-2/IS 13630-1	± 0.10 %
Surface Flatness Central Curvature	±0.40 % (± 1.80 mm)	±0.50 %	ISO 10545-2/IS 13630-1	± 0.20 %
Surface Flatness Edge Curvature	±0.40 % (± 1.80 mm)	±0.50 %	ISO 10545-2/IS 13630-1	± 0.20 %
Surface Flatness Warpage	±0.40 % (± 1.80 mm)	±0.50 %	ISO 10545-2/IS 13630-1	± 0.10 %
Surface Quality	>95% defects free	>95% defects free	ISO 10545-2/IS 13630-1	>95% defects free
Small Color Difference (For Plain Colour)	ΔE <1.00	N.A.	ISO 10545-16	ΔE <0.80
Glossiness (Polished)	As per Manufacturer	As per Manufacturer	Gloss Meter 60°	≥ 90
Glossiness (Satin/Posh)	As per Manufacturer	As per Manufacturer	Gloss Meter 60°	15 ≤ Gloss Value ≤ 25
Structural Properties				
Water Absorption	≤0.50 %	≤0.080 %	ISO 10545-3/IS 13630-2	≤0.080 %
Bulk Density	As per Manufacturer	Min 2.20 g/cc	ISO 10545-3/IS 13630-2	> 2.28 gm/cc
Massive Mechanical Properties				
Modulus of Rupture	Min. 35.0 N/mm ²	Min. 35.0 N/mm ²	ISO 10545-4/IS 13630-6	Min. 40.0 N/mm ²
Breaking Strength Thickness ≥7.5 mm	Min 13000 N	Min 13000 N	ISO 10545-4/IS 13630-6	Min 60000 N
Surface Mechanical Properties				
MOHS Hardness #	As per Manufacturer	Min. 5	BS EN 15771/IS 13630-13	Polished Min 4**/Satin & Posh Min 6
Surface Abrasion Resistance #	As per Manufacturer	Min. Class II	ISO 10545-7/IS 13630-11	Polished Min II**/Satin, Posh & Matt Min III
Thermal Hygrometric Properties				
Moisture Expansion	Max. 0.06% (0.6 mm/m)	Max. 0.02 mm/m	ISO 10545-10/IS 13630-3	Max. 0.02 mm/m
Thermal Expansion(COE) at 100°C	As per Manufacturer	Max. 6.0 x 10 ⁻⁶	ISO 10545-8/IS 13630-4	Max. 6.0 x 10 ⁻⁶
Thermal Shock Resistance	Min 10 Cycle	Min 10 Cycle	ISO 10545-9/IS 13630-5	Min 10 Cycle
Impact Resistance(COR) #	Min. 0.55	Min 0.55	ISO 10545-5/IS 13630-14	Min 0.55
Frost Resistance	As per Manufacturer	As per Manufacturer	ISO 10545-12/IS 13630-10	Frost Proof
Crazing Resistance at 7.5 bar	4 Cycle	4 Cycle	ISO 10545-11/IS 13630-9	4 Cycle
Chemical Properties				
Resistance to Staining Glazed	Min. Class 3	Min Class 1	ISO 10545-14/IS 13630-8	Min. Class 3/Min. Class 1
Resistance to Household Chemicals & Swimming Pool Salts Glazed	Min Class GB	Min Class AA	ISO 10545-13/IS 13630-8	Min Class GB/Min Class AA
Resistance to Low Concentrate Acid and Alkalis Glazed	As per Manufacturer	As per Manufacturer	ISO-10545-13/IS 13630-8	Min Class GLB***/Min Class A***
Resistance to High Concentrate Acid and Alkalis Glazed	As per Manufacturer	As per Manufacturer	ISO-10545-13/IS 13630-8	Min Class GHB***/Min Class A***
Safety Properties				
Skid Resistance –(DCOF-WET PENDULUM)##	As per Manufacturer	As per Manufacturer	BS 7976-2	Glossy ≥PQ, Satin, Posh ≥PIMatt ≥P2
Slip Resistance -Satin/ Matt (DCOF- R Value)##	As per Manufacturer	As per Manufacturer	DIN 51130	R9 to R13
Lead and Cadmium release	As per Manufacturer	N.A.	ISO-10545-15	Does not yield Pb & Cd

* Whichever is Lower
 ** With nano technology (Polished Vitrified tiles) Depending on Application area (low or high intensity of traffic)
 *** Except Hydrofluoric Acid & it's compound
 # Tiles Intended for use on floor
 ## For Floor tiles, as per customer requirement

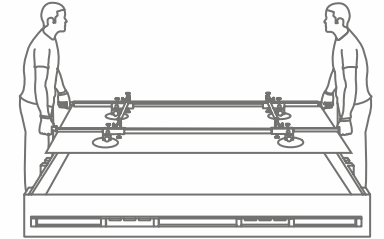
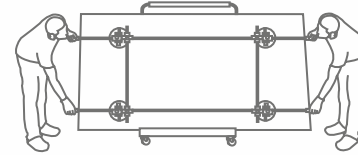
PACKING DETAILS

PRODUCT	SIZE	ACTULE SIZE	THICKNESS	TILES / BOX	COVERAGE AREA / BOX
ULTIMA15	80x240cm	800x2400mm	15 mm	1 pc	20.67 Sq ft 1.92 Sq ft
ULTIMA15	80x300cm	800x3000mm	15 mm	1 pc	25.84 Sq ft 2.4 Sq ft

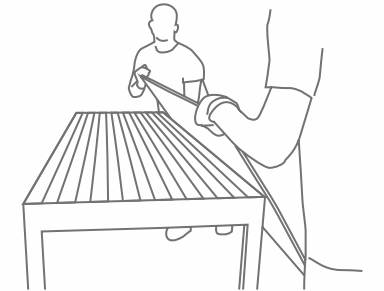
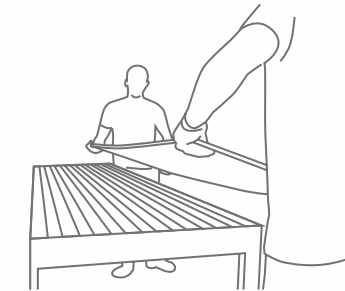
MANUALLY TRANSPORTING ULTIMA15 COUNTER TOP

Only for 1/4" Slabs

MOVING A ULTIMA15 COUNTERTOP



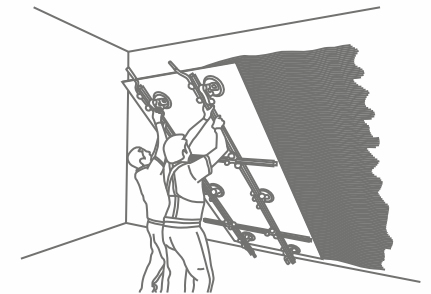
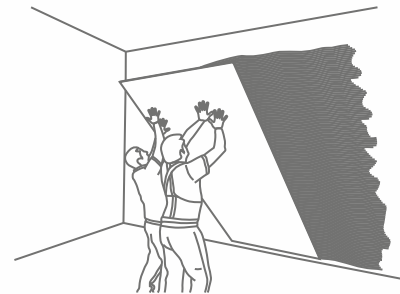
RAISING A ULTIMA15 COUNTERTOP ONTO A BENCH



✗ INCORRECT

✓ CORRECT

HANDLING ULTIMA15 FOR WALL

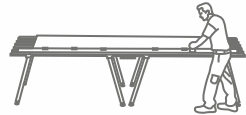


✗ INCORRECT

✓ CORRECT

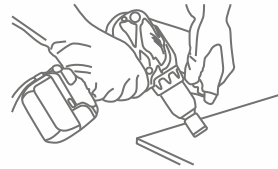
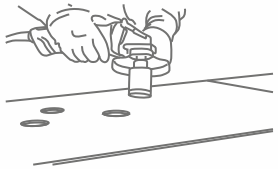
WORKING WITH THE VARIOUS VERSIONS OF ULTIMA15 COUNTERTOP

CUTTING WITH DIAMOND DISCS



Our products can be cut using diamond discs fitted onto the hand-held electrical grinding machine. The speed of Disc rotation must be high (>10000 RPM) and should have a low feed rate (< 1 m/min). It may be required to cool the disc with water. Recommended discs are the thin types generally used for cutting porcelain stoneware. The surface should be kept on a FLAT base while cutting without any gap underneath

DRILLING



You can use cutting discs fitted to battery-operated screwdrivers or angle grinders, electrical drills as an alternative.

INTERNAL CUT / L-SHAPED CUT

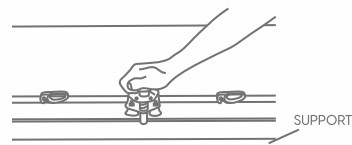
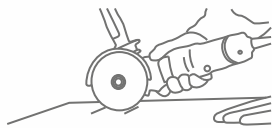


To get internal and L-shaped corners & to reduce the risk of breakage, round off the vertex of the internal corner using bits with a radius of at least 5mm. Then cut with diamond discs, be cautious to stop moving the cutting tool forward. To drill and cut using diamond discs, follow the instructions provided above.

When using these tools:

- Cool the point being drilled with water
- Don't put too much pressure and bear in mind the resistance of the type of laminated stoneware you are working on
- If you are using tungsten bits, start drilling at a low speed
- If you are using drills or screwdrivers, do not select hammering mode

EDGE-FINISHING

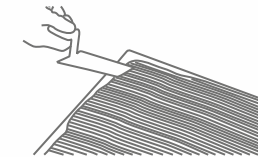


INSTRUCTIONS FOR MANUAL INSTALLATION

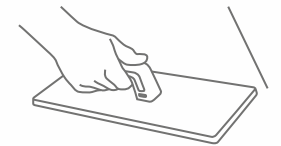
SINGLE LAYER METHOD



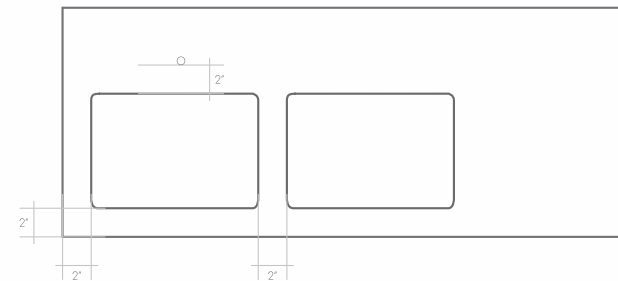
DOUBLE-LAYER METHOD



COMPRESSING THE TILE



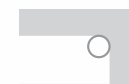
CUTOUT DESIGN



The minimum gap between a cutout and the edge of the slab must be at least 2". The size recommends distances greater than 2" when the kitchen design allows as it makes the countertop firmer.

IMPORTANT

All cutout corners must have a minimum diameter of 1/4". Never leave 90° angles. We recommend radiuses of more than 1/4" when the kitchen design allows as it makes the countertop firmer.



✓ CORRECT



✗ INCORRECT





✗ INCORRECT



✗ INCORRECT

CLEANING INSTRUCTIONS

DAY TO DAY CLEANING

Neutral, wax-free detergent list		Neutral, wax-free detergent list						
<p>(i) Follow the instructions given on the package. Test the product before actual use. This applies in particular to honed or polished products.</p>		Support to clean	What do you see?	What should you do?				
<table border="1"> <thead> <tr> <th>Name of detergent</th> <th>Manufacturer</th> </tr> </thead> <tbody> <tr> <td>Floor Cleaner Fila Cleaner Pflegerreiniger HMK P15 Bonamain Plus Bonadecon</td> <td>Faberchmica Fila Lithofin HMK Bonasystems Italia Bonasystems Italia</td> </tr> </tbody> </table>		Name of detergent	Manufacturer	Floor Cleaner Fila Cleaner Pflegerreiniger HMK P15 Bonamain Plus Bonadecon	Faberchmica Fila Lithofin HMK Bonasystems Italia Bonasystems Italia	ULTIMAIS COUNTERTOP	Glossy stains 	What should you do? Apply a slightly acidic detergent (such as Tile Cleaner by FABERCHIMICA or Bonamain PLUS the Bonasy stems Italy) undiluted and leave for 5-10 minutes. Rub with a white pad, rinse well with water and dry with microfibre cleaning cloth.
Name of detergent	Manufacturer							
Floor Cleaner Fila Cleaner Pflegerreiniger HMK P15 Bonamain Plus Bonadecon	Faberchmica Fila Lithofin HMK Bonasystems Italia Bonasystems Italia							
		It stains, absorbs 						

RESISTANCE TO COLD LIQUIDS

EN 12720 - RESISTANCE TO COLD LIQUIDS				
Products	Contact Time			
	16 hours	1 hour	10 min	10 sec
Acetic acid (10 % aqueous solution)	5	/	/	-
Acetone	5	-	-	/
Ammonia (10 % aqueous solution)	5	/	/	-
Red Wine	5	/	/	-
Citric acid (10 % aqueous solution)	5	/	/	-
Detergent Solution	5	/	-	-
Coffee	5	/	-	-
Chloramine T (2.5% aqueous solution)	5	/	/	-
Ethanol (48% aqueous solution)	5	/	/	-
Ethyl-butyl acetate (1:1)	5	-	-	/
Olive Oil	5	/	/	-
Paraffin oil	5	/	/	-
Sodium Carbonate (10 % aqueous solution)	5	/	-	-
Sodium chloride (15% aqueous solution)	5	/	-	-
Tea	5	/	-	-
Distilled water	5	/	-	-
Lager Beer	5	/	-	-
	5	/	/	-

Evaluation of the results	
/	Not necessary
-	Not required by UNI 10944

CATAS procedure - RESISTANCE TO COLD LIQUIDS (CLEANING PRODUCTS)	
Products	Contact Time : 16 hours
Cif Gel with bleach	5 (No change)
Cif Spray active with bleach	5 (No change)
Cillit Bang limestone and dirt	5 (No change)
Cif Power Cream Kitchen	5 (No change)
Ajax Classic Universal	5 (No change)
Glassex with ammonia	5 (No change)
Multipurpose Sanitizing Vetril	5 (No change)
Ace bleach	5 (No change)
Vical	5 (No change)
Denatured alcohol	5 (No change)
Ammonia (sol6 / 7 %)	5 (No change)
Mastro Lindo	5 (No change)
Ajax floors	5 (No change)
Rio Casamia floors	5 (No change)
Lisoform Casa	5 (No change)

Evaluation of the results		Contact Time : 16 hours
5		No change
4		Slight level of change
3		Moderate level of Change
2		Significant level of Change
1		Very high level of change

HEAVY CLEANING

Support to clean	Type of dirt	What to use	Instructions	Name of detergent	Manufacturer
ULTIMATE COUNTERTOP	Coffee, Coca Cola®, fruit juice	Detergent Alkaline-based	Follow the instructions given by the manufacturer of the detergent.	Coloured stain remover Ps87 Greslind	Faberchmica Fila Panarica Group
	Wine	Oxidising detergent	Follow the instructions given by the manufacturer of the detergent.	Oxidant	Faberchmica
	Lime residues	Acid-based etergents	Follow the instructions given by the manufacturer of the detergent. Test the product on the tiles before use. This applies in particular to honed or polished products.	Vical	Procter & Gamble
	Rust	Acid-based etergents	Dilute the product and apply directly on the stain. Allow to act for 10/20 minutes then rinse thoroughly. If necessary repeat. Test the product on the tiles before use. This applies in particular to honed or polished products.	Diluted muriatic acid	(various manufacturers)
	Pencil marks and metal marks	Abrasive paste	Follow the instructions given by the manufacturer of the detergent. Test the product on the tiles before use. This applies in particular to honed or polished products.	Polishing cream Vim clorex Detergum (*) Strong remover (*) (*DO NOT use on kapped or polished products.	Faberchmica Guaber Zep Italia Faberchmica
	Ink/felt-tip pen	Detergent solvent based	Solvents should be applied undiluted directly on the stain. Let them act for about 15/30 seconds. If necessary repeat. As far as "Coloured stain remover" is concerned, follow the manufacturer's instructions.	Nitro thinner 12-dichloroethylene Turpentine / white spirit Coloured stain remover	(various manufacturers) (various manufacturers) (various manufacturers) Faberchmica
	Nail polish	Detergent solvent based	Solvents should be applied undiluted directly on the stain. Let them act for about 15/30 seconds. If necessary repeat.	Acetone Solvent for nail polish	(various manufacturers) (various manufacturers)
	Dirt from grout	Detergent for grout	Follow the instructions given by the manufacturer of the detergent	Fugonet Fugenreiniger	Fila Lithofin

NEW
THINKING



📍 SHOP NO-23, PATEL CHAMBER, 8-A NATIONAL HIGHWAY,
LALPAR, MORBI-GUJRAT-363642

☎ +91 79908 02022 | ☎ +91 97231 61951

✉ venomceramica@gmail.com